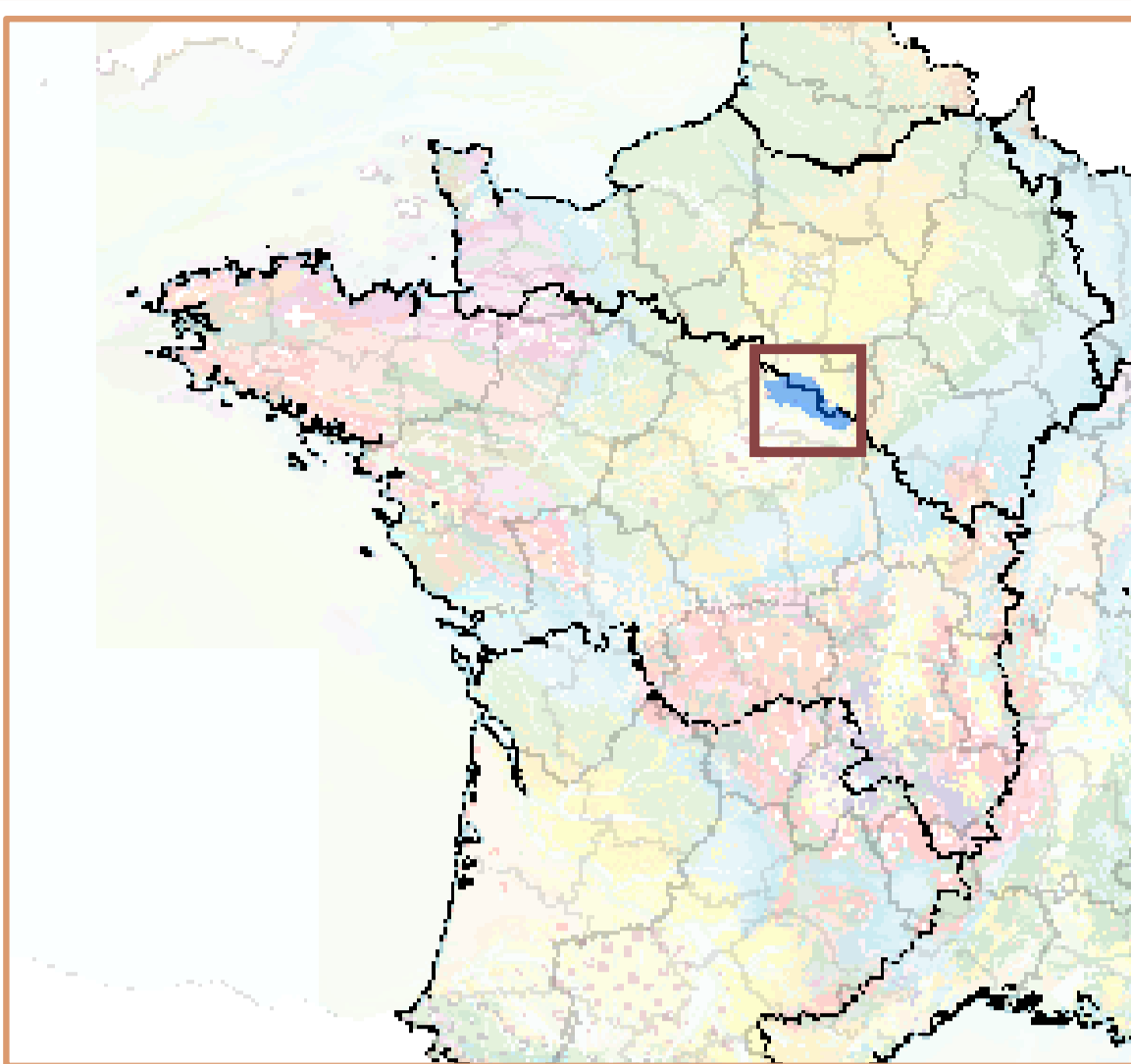


**Masse d'eau souterraine : 4135**

**EU Code FRGG135**

Nouveau code national (Sandre ve1.1) : **GG135**

**Calcaires tertiaires captifs de Beauce sous forêt d'Orléans**



Eco-Region  
Plaines occidentales  
District  
La Loire, les cours d'eau côtiers vendéens et bretons

**Caractéristiques principales**

Type Dominante sédimentaire  
Ecoulement Captif

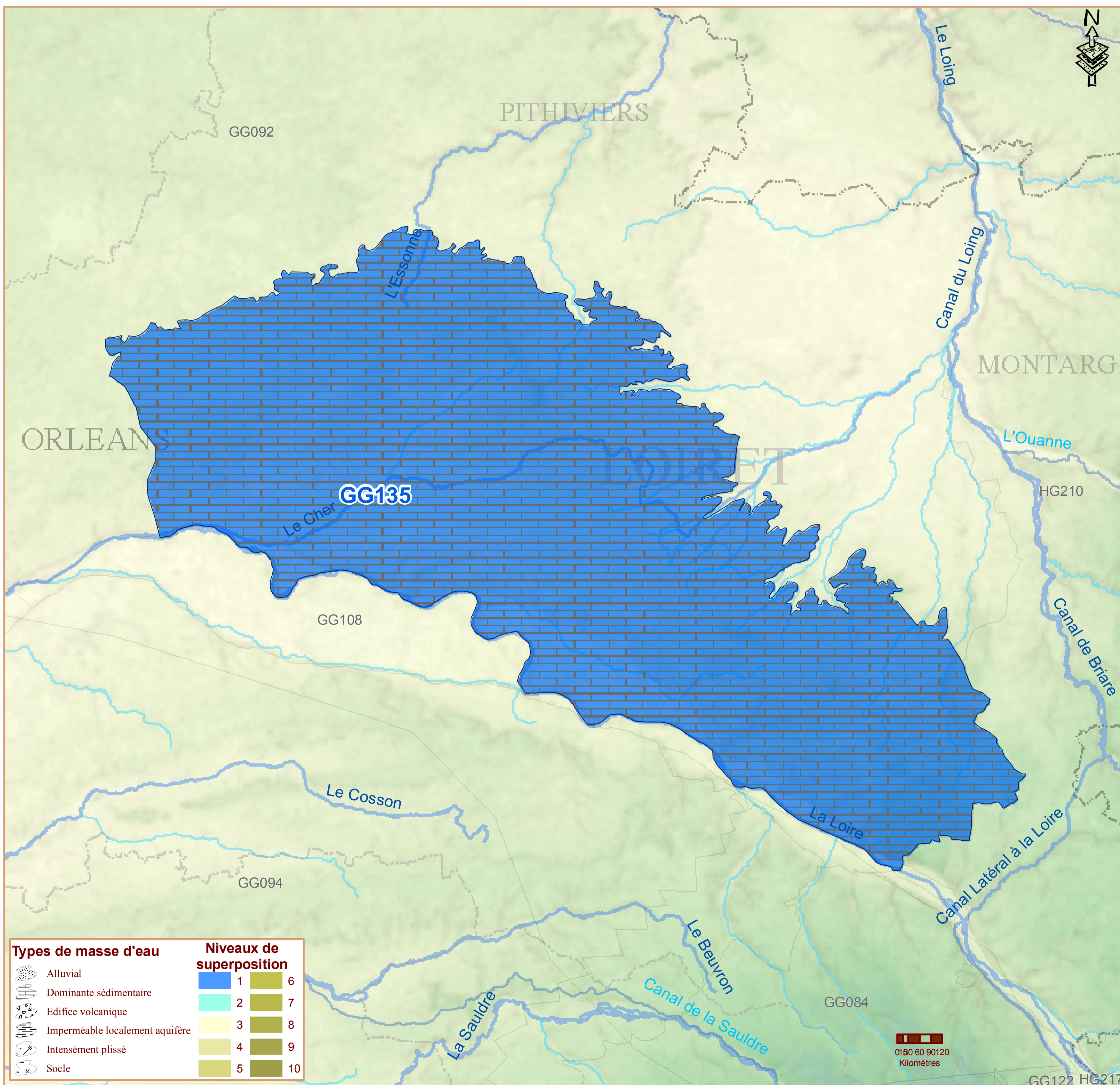
Niveaux de recouvrement  
ordres %







1 100.00%

**Caractéristiques secondaires**

Surface en km<sup>2</sup>

<i>Karstique</i>	Y	affleurante	sous couverture	totale
<i>Intrusion saline</i>	N			
<i>Entités disjointes</i>	N	1520		1520
<i>Trans-bassin</i>	Y	<i>Trans-frontière</i>		N



Types de masse d'eau	Niveaux de superposition	
 Alluvial	1	6
 Dominante sédimentaire	2	7
 Edifice volcanique	3	8
 Imperméable localement aquifère	4	9
 Intensément plissé	5	10
 Socle		

**Commentaires**

0130 60 90120  
Kilomètres