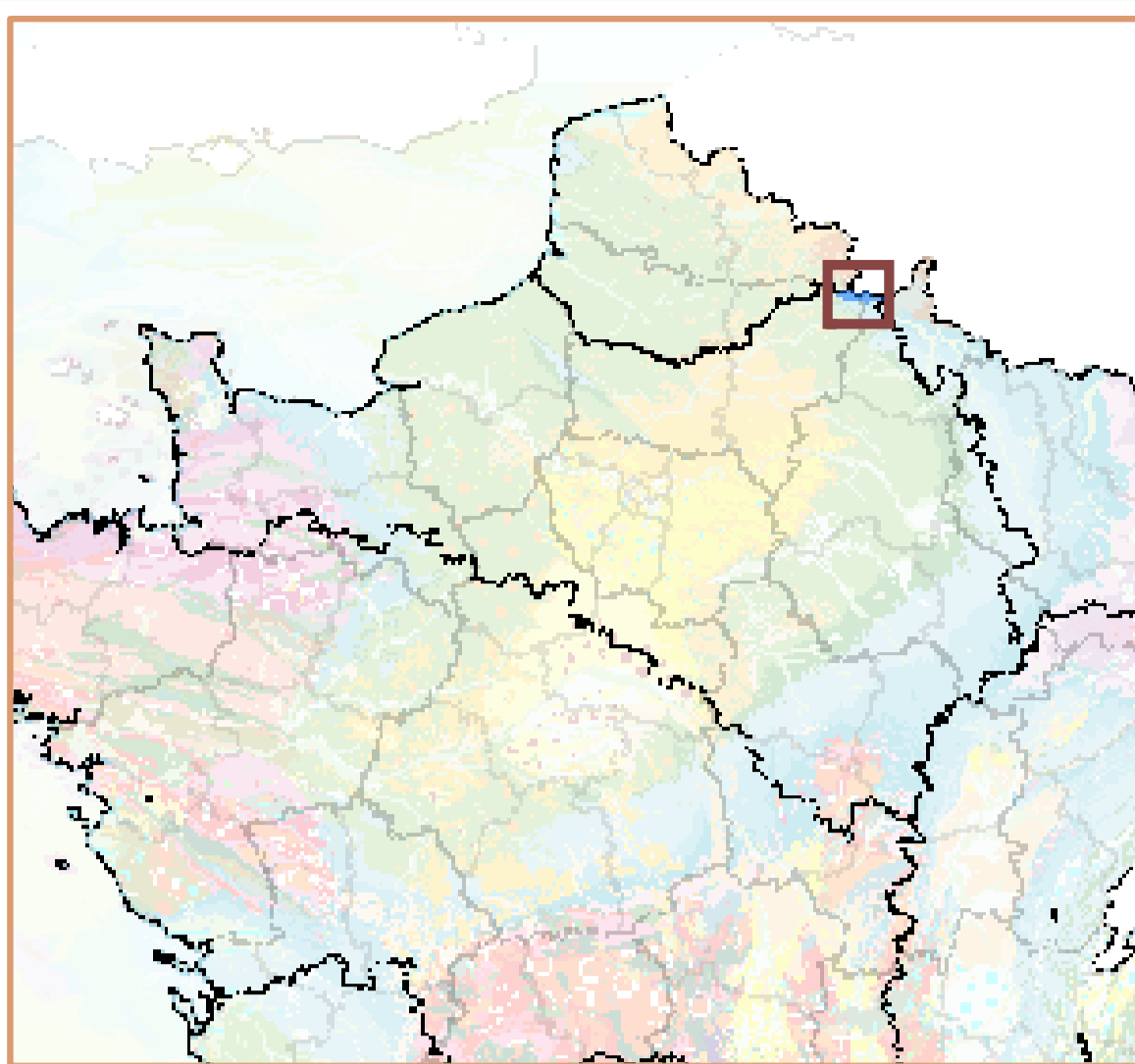


Masse d'eau souterraine : 3508 **EU Code FRHG508**

Nouveau code national (Sandre ve1.1) : **HG508**

Socle ardennais du bassin versant de l'Oise



Eco-Region
Plaines occidentales
District
La Seine et les cours d'eau
côtiers normands

Caractéristiques principales

Type Socle
Ecoulement Libre

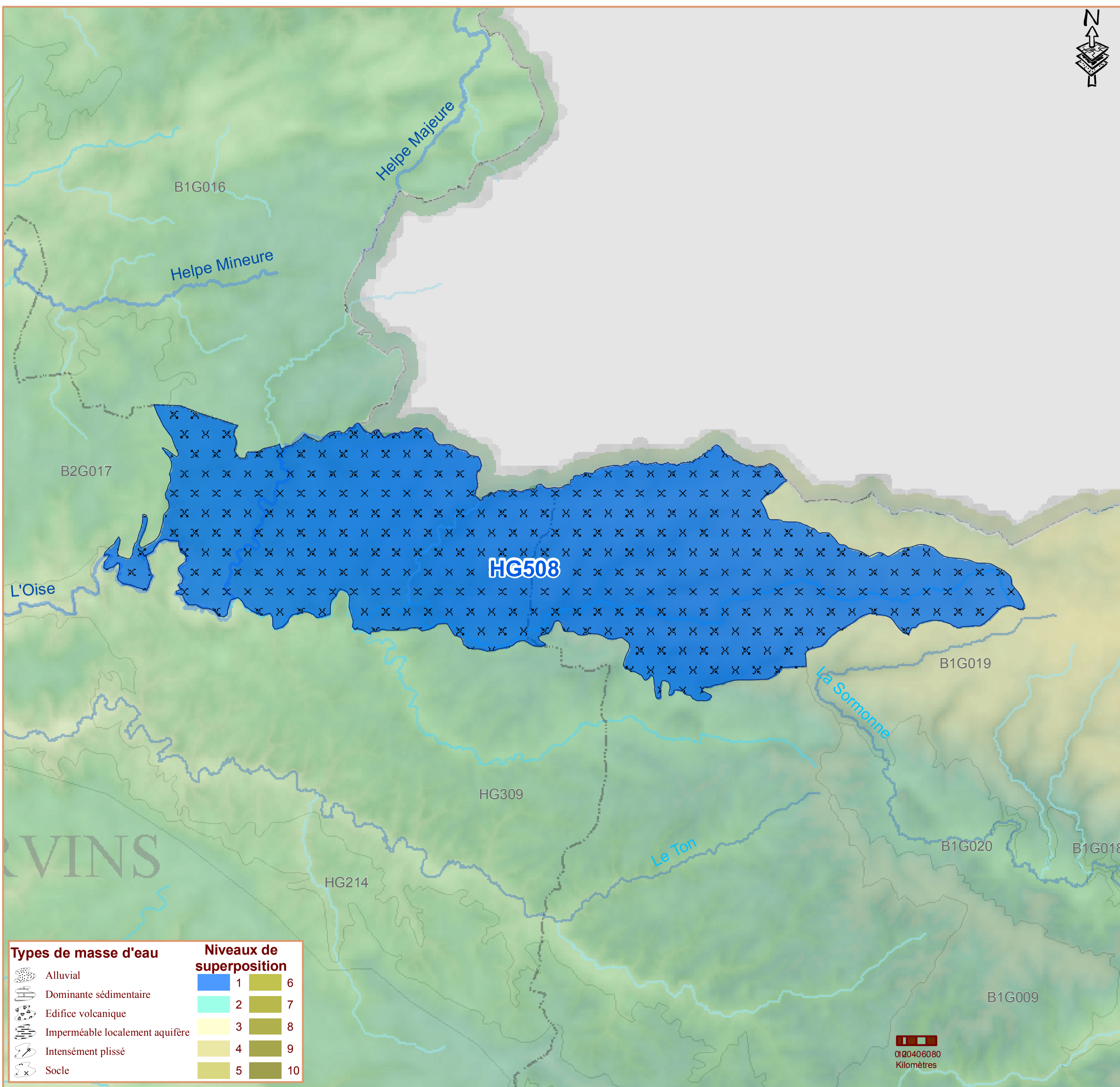
Niveaux de
recouvrement
ordres %

















1 100.00%

Caractéristiques secondaires

Surface en km²

	N	affleurante	sous couverture	totale
<i>Karstique</i>	N			
<i>Intrusion saline</i>	N			
<i>Entités disjointes</i>	Y	153		153
<i>Trans-bassin</i>	N	<i>Trans-frontière</i>		N



Types de masse d'eau		Niveaux de superposition	
	Alluvial		1
	Dominante sédimentaire		2
	Edifice volcanique		3
	Imperméable localement aquifère		4
	Intensément plissé		5
	Socle		6
			7
			8
			9
			10

Commentaires